



Dear Parents:

As the beginning of the new school year approaches, Northeastern Music Programs is preparing for a return to in-person instrumental music lessons for the 2021-22 school year! To our returning students and families, we say 'Hello' and 'Welcome back!' To new students and families, it is with great excitement that we extend an invitation to join the instrumental music program at your school. We are looking forward to a wonderful year of making music – **IN PERSON!**

Each year students eagerly await their turn to join/rejoin our instrumental music program. The study of music could be one of the most valuable steps in your child's education. Some of the benefits your child can receive from it are responsibility, mental discipline, teamwork, self-esteem, and above all an enjoyment and lifelong appreciation of music. They will also be participating with a positive peer group that can influence their success in other academic and social areas. Our experience as music teachers has convinced us that any child willing to put in a reasonable amount of effort can succeed.

Parents and students often wonder if the time required in music will hinder other studies. The National Association of Elementary School Principals reports that children who participate in music often excel in academic areas. Their study shows that music can enhance reading, writing, math, history, art, eye-hand coordination, memory, self-discipline, and the ability to follow directions.

HOW TO JOIN

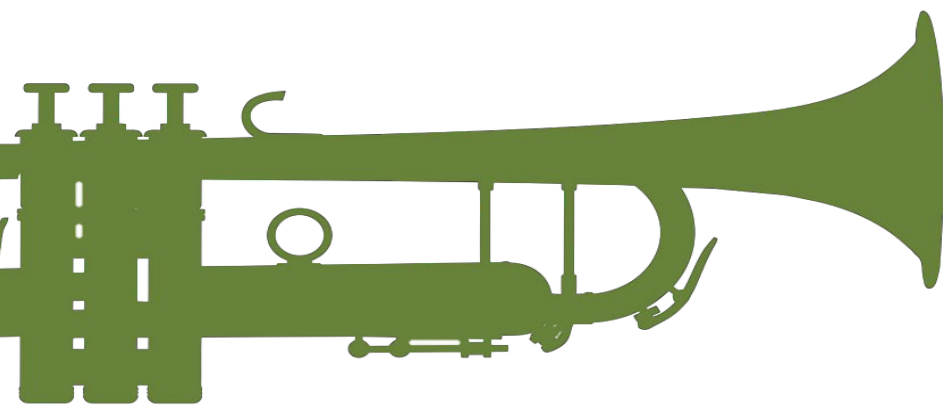
Attached to this letter is a list of frequently asked questions about the program. We are confident that we will be able to offer music lessons safely with the proper precautions.

- How to enroll – Please visit <https://nemusicprograms.com>
- How to rent an instrument – Please visit <https://mencheymusic.com>
- Questions? – Please contact us at 888-636-2439

We are passionate about growing a new generation of musicians, music lovers, and future patrons of the arts. Please join us in 2021-22 in what we know will be a transformative experience for your child.

Sincerely,

Daryl Balseiro
Music Supervisor and General Manager
Northeastern Music Programs



+1 717-637-2185
+1 717-637-1978 (fax)



PO Box 474
Hanover PA 17331



info@nemusicprograms.com
<https://nemusicprograms.com>



INSTRUMENTAL MUSIC FAQs FOR PARENTS



Does my child need to know how to play an instrument to join?

No. We teach your child everything he/she needs to know to play their musical instrument.

Is it safe to participate in music classes?

Yes! Many studies have been conducted measuring the safety of music rehearsals in the school setting. Please refer to the attachment from the New Jersey Arts Education Partnership regarding aerosols and COVID-related safety information.

Will students be required to wear masks in lessons/rehearsals?

We will adhere to the policy set at each individual school. If a school requires masks, then students will wear masks in lessons. If masks are not required in schools, then masks will be optional (but highly recommended). You can purchase special "musicians masks" from our parent company, Menchey Music Service..

What precautions are being taken to keep lessons as safe as possible?

Instrument PPE is required for all woodwind or brass musicians. These bell covers and flute shields will help contain the aerosols released when playing a wind instrument and be ordered from Menchey Music Service.

We will also require students to sit a minimum distance of 3' apart during lessons and rehearsals.

Finally, students and parents can do their part by investing in sanitizing spray for their mouthpiece and regular cleaning of the instrument. Contact your teacher for the best method to de-sanitize your child's instrument.

When will lessons meet and how much time will it take?

Your child will receive one (1) small group lesson each week during the school day. All lessons are 30 minutes and meet on a rotating schedule so students do not miss the same class each week.

How much does participation cost?

There are two components to participation in the program: tuition and a **quality** musical instrument. Complete rate information for tuition and a musical instrument can be found on our company website.

If my child doesn't sign up now, will he/she be able to later?

Although we do not recommend delaying enrollment in the program, we do welcome registrations throughout the year. Students that join the program mid-year will have to work diligently to catch up to their peers. Our teachers will do their best to get your child caught up.

Will participation affect my child's grades in other subjects?

It will almost surely help them. Research has shown that band has a positive influence on other studies. Music students consistently average higher grades than non-music students.

Can you be in the band/orchestra and be involved in other school activities like sports, cheerleading, dance, step, chorus, or art?

Yes, many of our music students are involved in other electives and activities.

My child is involved in so many activities. Won't those activities affect his/her performance in band/orchestra and vice versa?

Music students often have many varied interests that make them among the busiest students in the school. The experience that they gain in balancing these interests and activities often proves to be one of life's most valuable lessons.



HOW TO ENROLL



Enroll Online

1

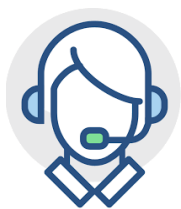
ENROLL* your child in the band program at www.nemusicprograms.com

– THEN –

2

RENT an instrument for your child at www.mencheymusic.com

OR



Call Us

Our customer service representatives are ready to assist you by calling:

1-888-MENCHEY (636-2439)

* Tuition does NOT include use of an instrument.

** Paper enrollment forms are available on a limited basis from your child's band teacher.